



Southern Health-Santé Sud
POPULATION STATISTICS 2017

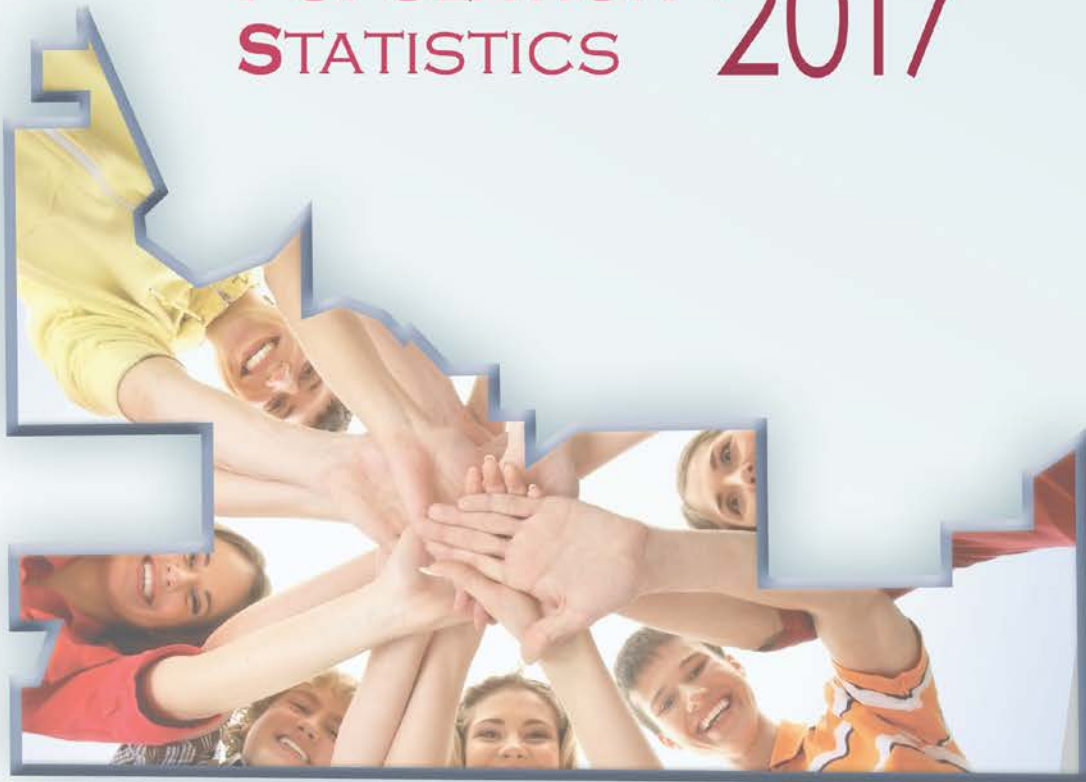


TABLE OF CONTENTS

BACKGROUND	3
MUNICIPAL AMALGAMATIONS FOR 2017	3
2017 POPULATION – SOUTHERN HEALTH-SANTÉ SUD	4
NORTH AREA	5
MID AREA	6
WEST AREA	7
EAST AREA	8
10 YEAR POPULATION GROWTH (2007-2017)	9
MANITOBA RHA COMPARISONS	9
AGE GROUP COMPARISONS	11
DISTRICT AND MUNICIPAL POPULATION CHANGE	12
INDIGENOUS POPULATION	15
MAP OF REGION	16



This publication is available in alternate format upon request.

BACKGROUND

The population data shown in this report is based on records of residents registered with Manitoba Health as of June 1, 2017 and published by Manitoba Health, Seniors and Active Living (<http://www.gov.mb.ca/health/population/>). This population database is considered a reliable and accurate estimate of population sizes, and is helpful for understanding trends and useful for health planning purposes. The Indigenous population has also been updated in March 2018 by the Indigenous Health program with the great help of Band Membership clerks.



Southern Health-Santé Sud covers an area of 27,025 square kilometers in southern Manitoba. It stretches up from the 49th parallel and borders the United States of America to the south, and the Ontario border to the east. The region lies along the route of the Trans-Canada highway, and includes the south-west edge of Lake Manitoba down to the Pembina escarpment in the west.

Southern Health-Santé Sud is one of five regional health authorities (RHA) in Manitoba. The other four RHAs include: Northern Health Region, Interlake-Eastern RHA, Prairie Mountain Health, and WRHA (Winnipeg).

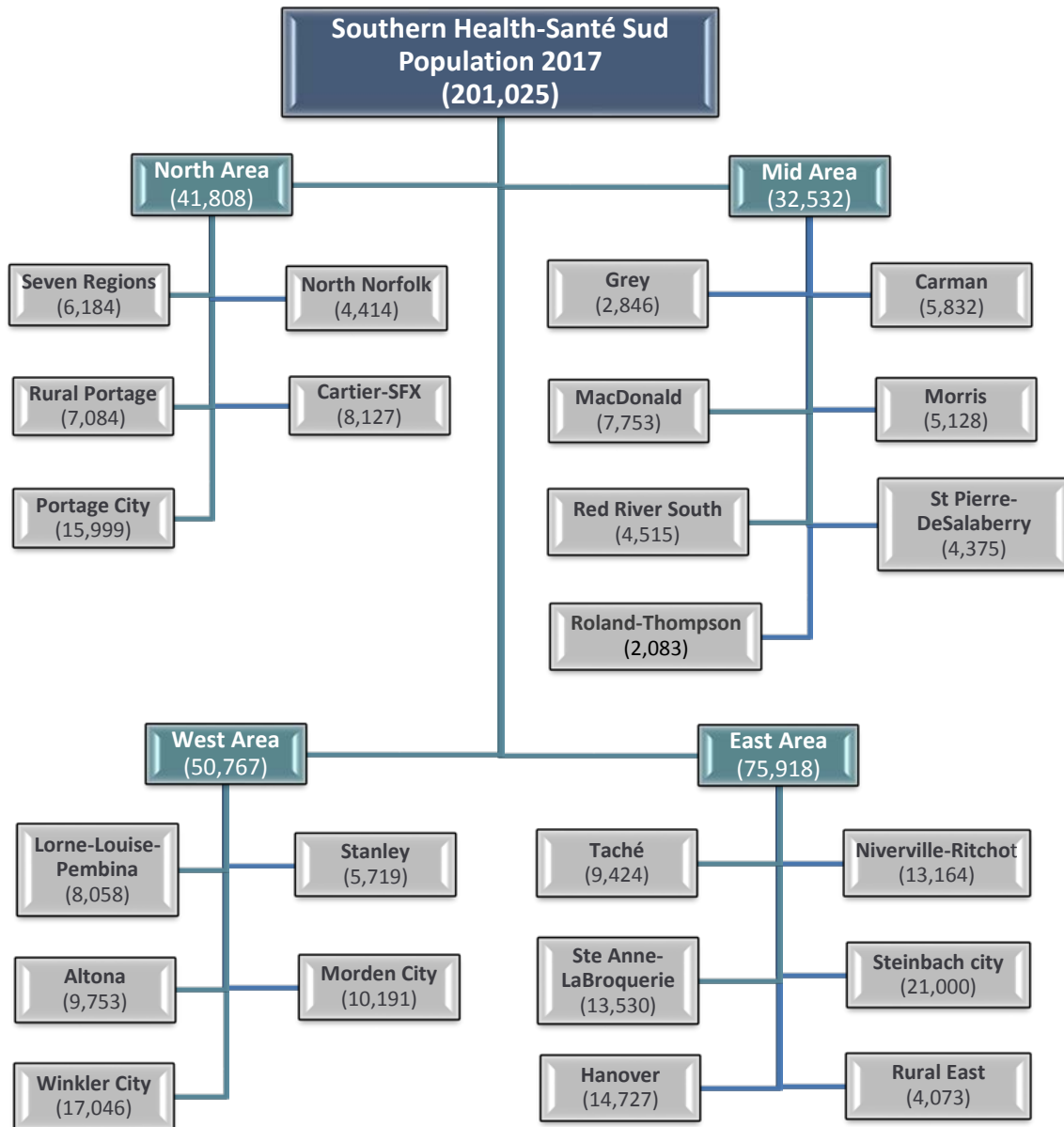
Municipal Amalgamations

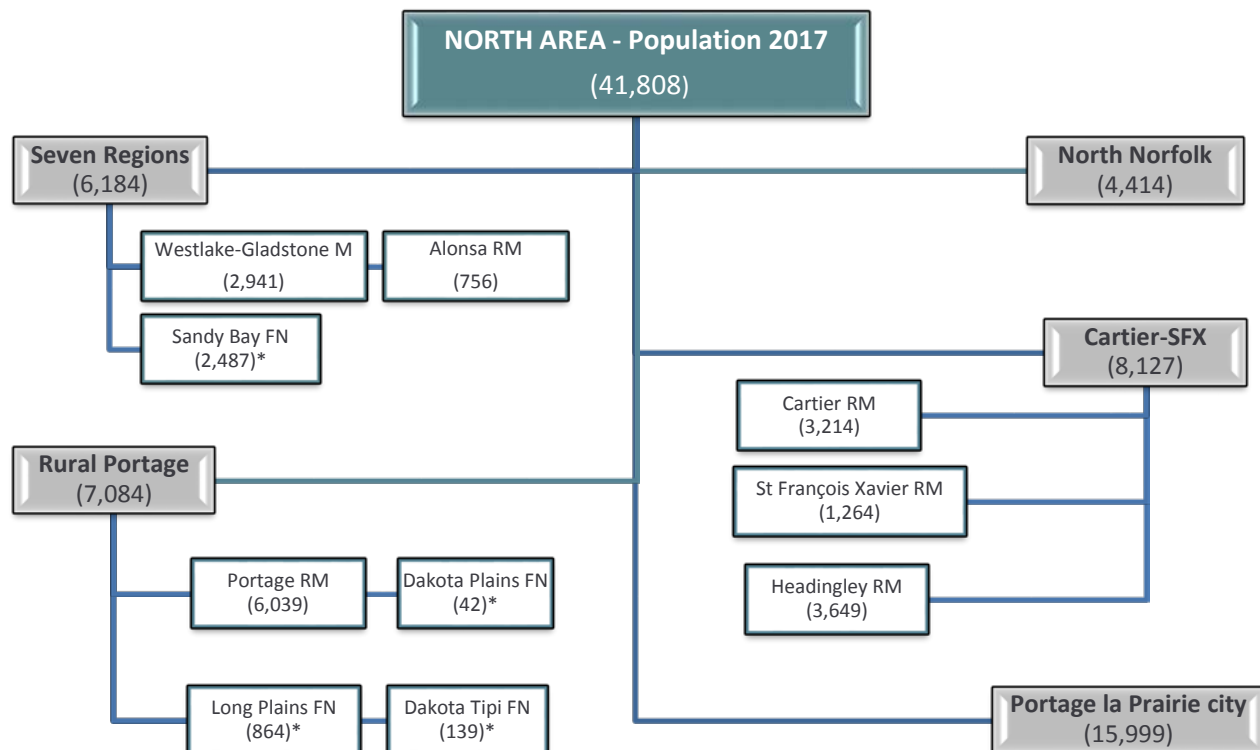
A series of municipal amalgamations came into effect as of January 1, 2015. A map of Southern Health-Santé Sud is on page 16. These newly defined municipalities affect the following areas:

New Municipality	Former Municipalities	District Name
Emerson-Franklin Municipality	Emerson T, Franklin RM	Emerson-Franklin
Grey Municipality	Grey RM, St Claude V**	Grey
Lorne Municipality	Lorne RM, Somerset V, Notre Dame des Lourdes V**	Lorne
Louise Municipality	Louise RM, Crystal City V, Pilot Mound T	Louise
North Norfolk Municipality	North Norfolk RM, MacGregor T	North Norfolk
Pembina Municipality	Pembina RM, Manitou T	Pembina
Rhineland Municipality	Rhineland RM, Plum Coulee T, Gretna T	Rhineland
Westlake-Gladstone Municipality	Lakeview RM, Westbourne RM, Gladstone T	Westlake-Gladstone
Morris Municipality	Morris T, Morris RM	Morris

****Please note that the district previously called “St Claude/Notre Dame de Lourdes” no longer exists. St Claude village is now part of the Grey RM population, and Notre Dame de Lourdes is part of the Lorne Municipality population.**

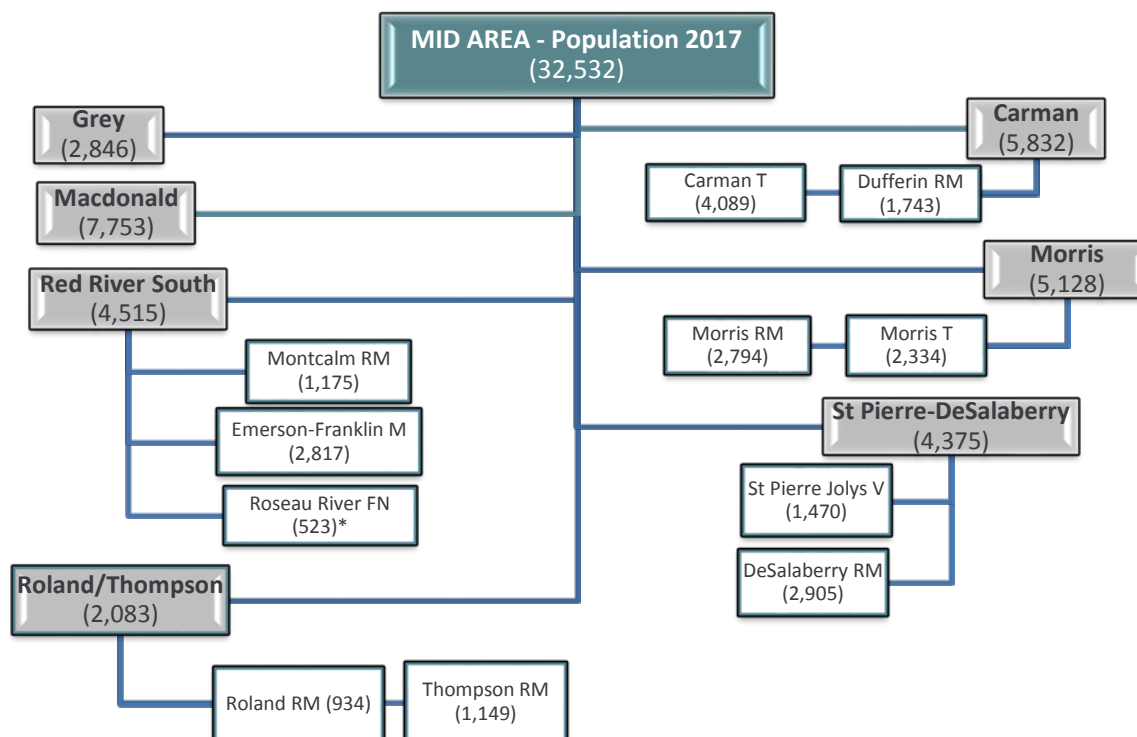
2017 POPULATION – Southern Health-Santé Sud





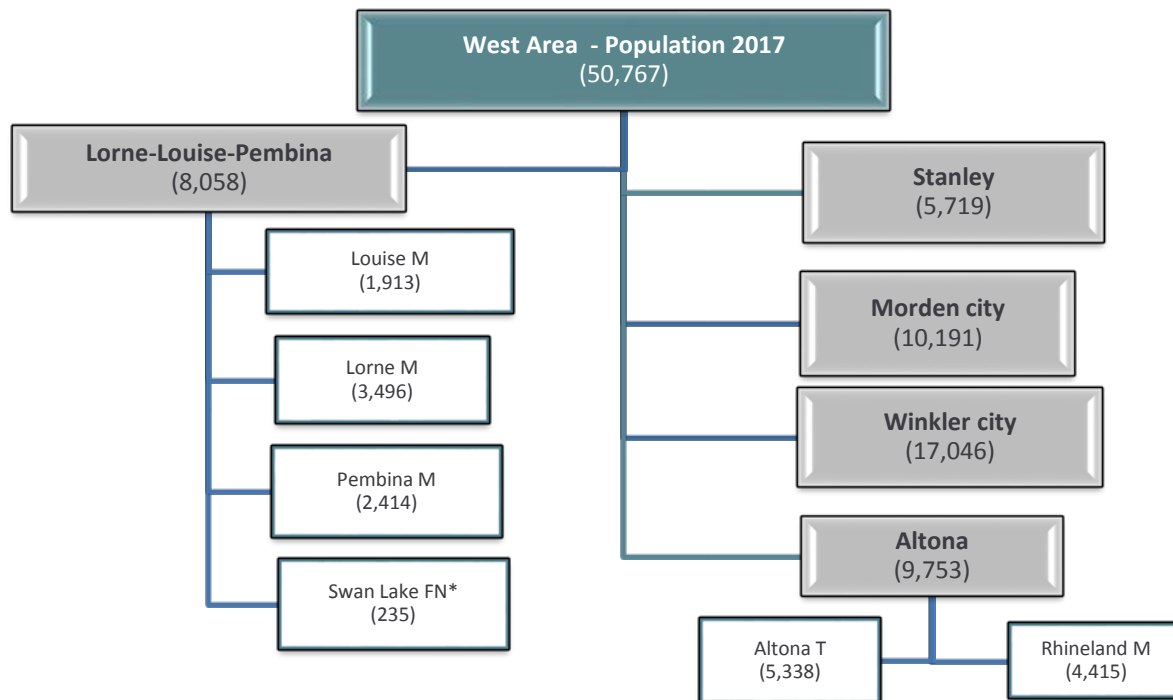
NORTH AREA	2017	2016	Pop. Change	Percent Change
DISTRICT: Seven Regions	6,184	6,166	18	0.3%
Westlake-Gladstone Municipality	2,941	2,943	-2	-0.1%
Alonsa RM	756	776	-20	-2.6%
Sandy Bay Ojibway First Nations*	2,487	2,447	40	1.6%
DISTRICT: Rural Portage	7,084	7,045	39	0.6%
Dakota Tipi First Nation*	139	143	-4	-2.8%
Dakota Plains First Nation*	42	40	2	5.0%
Long Plain First Nation *	864	883	-19	-2.2%
Portage RM	6,039	5,979	60	1.0%
DISTRICT: North Norfolk Municipality	4,414	4,391	23	0.5%
DISTRICT: Cartier-SFX	8,127	7,669	458	6.0%
Cartier RM	3,214	3,213	1	0.0%
St François Xavier RM	1,264	1,237	27	2.2%
Headingley RM	3,649	3,219	430	13.4%
DISTRICT: Portage la Prairie City	15,999	15,777	222	1.4%
NORTH AREA	41,808	41,048	760	1.9%

*according to Manitoba Health, Seniors and Active Living, 2017 population registry file – see page 15 for Indigenous Population



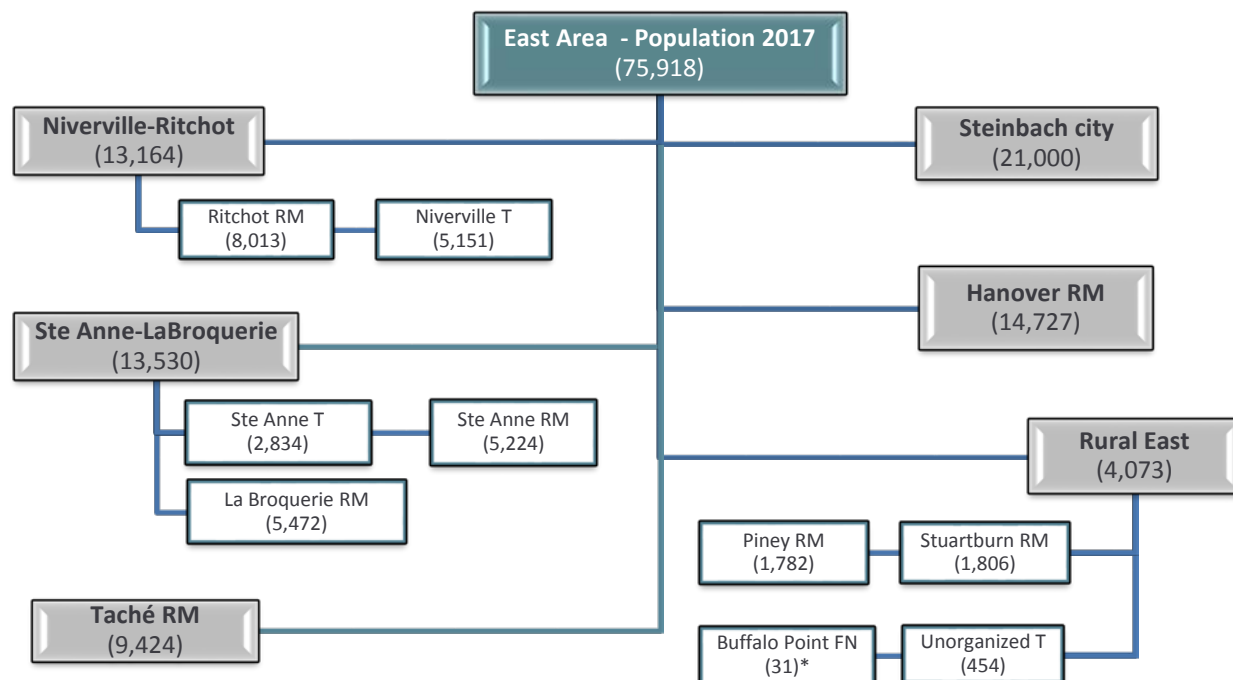
MID AREA	2017	2016	Pop change	Percent change
District: Grey Municipality	2,846	2,813	33	1.2%
District: Macdonald RM	7,753	7,516	237	3.2%
District: Red River South	4,515	4,590	-75	-1.6%
Emerson-Franklin Municipality	2,817	2,870	-53	-1.8%
Montcalm RM	1,175	1,179	-4	-0.3%
Roseau River Anishinabe FN*	523	541	-18	-3.3%
District: Roland/Thompson	2,083	2,104	-21	-1.0%
Roland RM	934	953	-19	-2.0%
Thompson RM	1,149	1,151	-2	-0.2%
District: Carman	5,832	5,757	75	1.3%
Carman T	4,089	4,004	85	2.1%
Dufferin RM	1,743	1,753	-10	-0.6%
District: Morris	5,128	5,093	35	0.7%
Morris RM	2,794	2,812	-18	-0.6%
Morris T	2,334	2,281	53	2.3%
District: St Pierre-DeSalaberry	4,375	4,314	61	1.4%
St Pierre Jolys V	1,470	1,460	10	0.7%
De Salaberry RM	2,905	2,854	51	1.8%
MID AREA SUBTOTAL	32,532	32,187	345	1.1%

*according to Manitoba Health, Seniors and Active Living, 2017 population registry file – see page 15 for Indigenous Population



WEST AREA	2017	2016	Pop change	Percent change
District: Lorne/Louise/Pembina	8,058	8,019	39	0.5%
Lorne Municipality	3,496	3,542	-46	-1.3%
Louise Municipality	1,913	1,895	18	0.9%
Pembina Municipality	2,414	2,352	62	2.6%
Swan Lake FN*	235	230	5	2.2%
District: Altona	9,753	9,685	68	0.7%
Rhineland Municipality	4,415	4,441	-26	-0.6%
Altona T	5,338	5,244	94	1.8%
District: Stanley	5,719	5,769	-50	-0.9%
District: Morden City	10,191	9,945	246	2.5%
District: Winkler City	17,046	16,712	334	2.0%
WEST AREA SUBTOTAL	50,767	50,130	637	1.3%

*according to Manitoba Health, Seniors and Active Living, 2017 population registry file – see page 15 for Indigenous Population

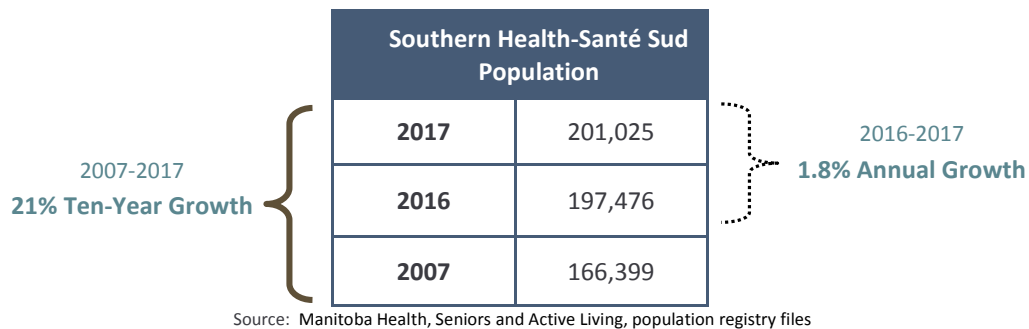


EAST AREA	2017	2016	Pop change	Percent change
District: Niverville-Ritchot	13,164	12,599	565	4.5%
Niverville T	5,151	5,005	146	2.9%
Ritchot RM	8,013	7,594	419	5.5%
District: Ste. Anne-LaBroquerie	13,530	13,142	388	3.0%
Ste Anne T	2,834	2,789	45	1.6%
Ste Anne RM	5,224	5,116	108	2.1%
LaBroquerie RM	5,472	5,237	235	4.5%
District: Taché	9,424	9,438	-14	-0.1%
District: Steinbach City	21,000	20,538	462	2.2%
District: Hanover	14,727	14,356	371	2.6%
District: Rural East	4,073	4,038	35	0.9%
Piney RM	1,782	1,746	36	2.1%
Stuartburn RM	1,806	1,805	1	0.1%
Unorganized Territory	454	457	-3	-0.7%
Buffalo Point FN*	31	30	1	3.3%
EAST AREA SUBTOTAL	75,918	74,111	1,807	2.4%

*according to Manitoba Health, Seniors and Active Living, 2017 population registry file – see page 15 for Indigenous Population

10 YEAR POPULATION GROWTH (2007-2017)

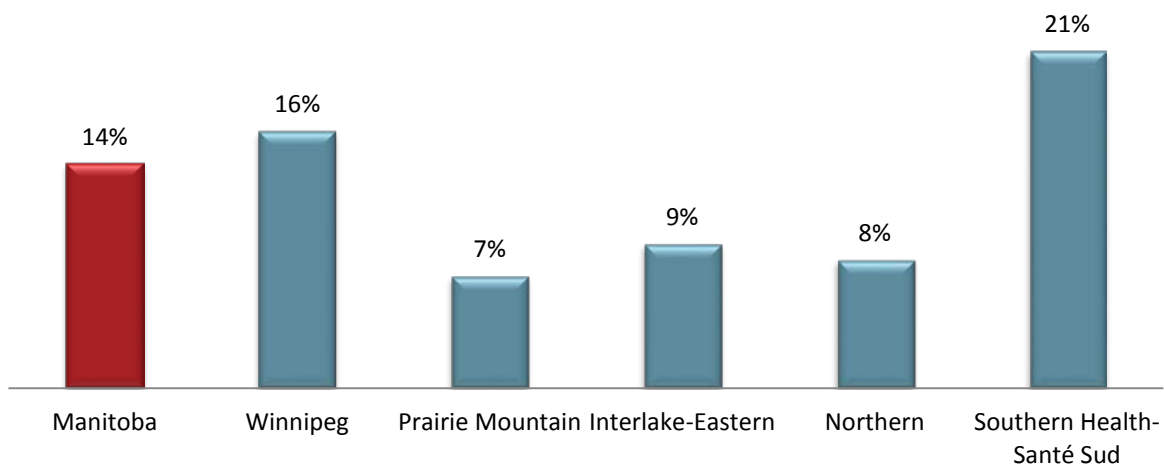
As shown below, the 2017 population for the Southern Health-Santé Sud was **201,025** with an annual growth rate of 1.8%, and a ten-year growth rate of 21%. This translates to 3,549 more residents in the past year (2016 to 2017) and to 34,626 more residents in the past ten years (2007 to 2017).



Manitoba RHA Comparisons

Southern Health-Santé Sud continues to have the fastest growing population in Manitoba. It has grown by 21% in the past decade which is the highest in the province. The Manitoba average growth rate for this time period was 14%.

Manitoba Regional Health Authorities Population Change 2007-2017.



Source: Manitoba Health, Seniors and Active Living, Population Report 2007 and 2017

Although Southern Health-Santé Sud has the highest percentage of growth, it does not have the highest volume of growth for the province. As shown below, Manitoba has grown over 170,000 residents over the past decade. Winnipeg, during this time period, represented over 107,000 new residents and contributed to 63% of the Manitoba growth. Nevertheless, Southern Health-Santé Sud’s contribution of 21%, was the largest volume growth among rural RHAs. This population growth pattern for regions across Manitoba has been fairly consistent over the years.

Population Change among Manitoba Regional Health Authorities, 2007-2017.

Regional Health Authority	Population 2017	Population 2007	Population Change	Contribution to Manitoba Growth
Winnipeg (WRHA – incl. Churchill)	779,366	671,777	107,589	63%
Prairie Mountain Health	170,688	159,489	11,199	7%
Interlake-Eastern	129,037	117,884	11,153	6%
Northern	76,845	70,837	6,008	3%
Southern Health-Santé Sud	201,025	166,399	34,626	21%
Manitoba	1,356,961	1,186,386	170,575	100%

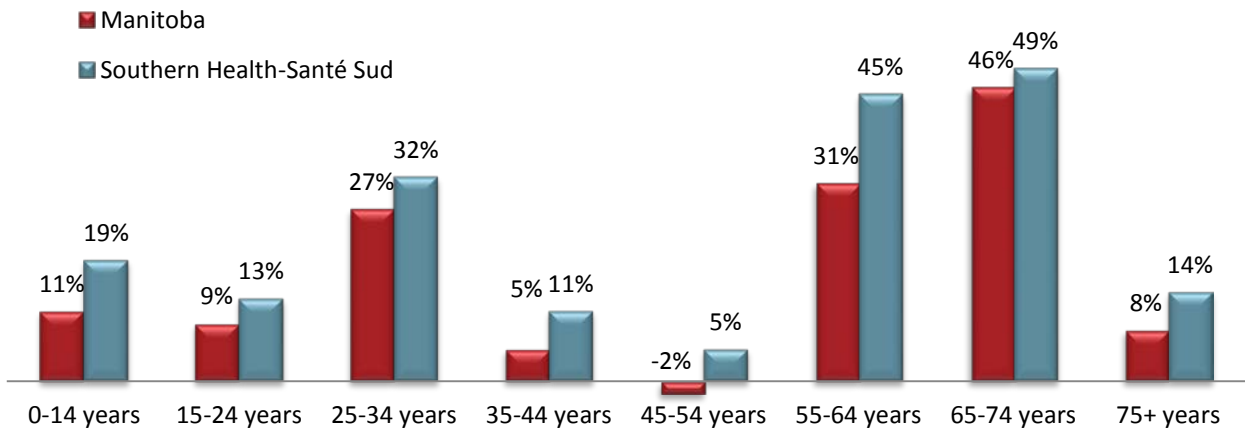
Source: Manitoba Health, Seniors and Active Living, Population Report 2007 and 2017



AGE GROUP COMPARISONS

Southern Health-Santé Sud's population continues to grow across all age groups. In particular, it is worth noting that while Manitoba has only grown by 11% in the youngest age group (0-14 years), the region has grown by 19% in the youngest age group (0-14 years). The graph also depicts an aging population with the fastest growing cohort between 55-74 years ("baby boomers").

Population Change by Age Group, Manitoba and Southern Health-Santé Sud, 2007-2017.

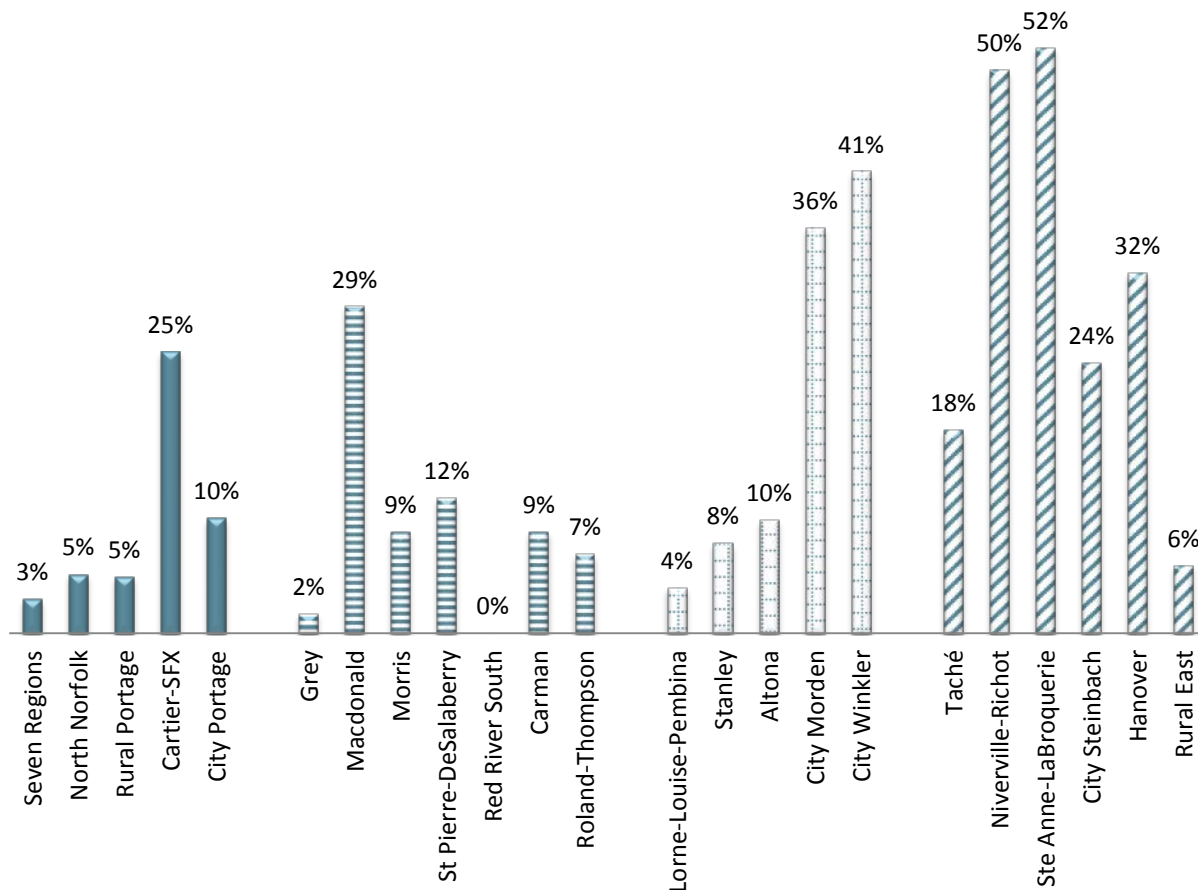


Source: Manitoba Health, Seniors and Active Living, Population Report 2007 and 2017

DISTRICT AND MUNICIPAL POPULATION CHANGE

The figure below shows the population growth within the region by districts. The district of Ste. Anne-LaBroquerie experienced the highest rate of growth at 52%. The general trend for population growth in Southern Health-Santé Sud is the highest around bedroom communities close to Winnipeg and the four cities within the region. The districts which experienced a lot of population change (25 percent or more) included: Cartier-SFX, Macdonald, Morden city, Winkler city, Niverville-Ritchot, Ste Anne-LaBroquerie and Hanover. In contrast, the districts which experienced very little population change (5 percent or less) included: Seven Regions, North Norfolk, Rural Portage, Grey, Red River South, and Lorne/Louise/Pembina.

Population Growth by Districts, Southern Health-Santé Sud, 2007-2017.



Source: Manitoba Health, Seniors and Active Living, Population Report 2007 and 2017

Population Growth by Districts and Municipalities, 2007-2017

North Area	Population 2017	Population 2007	Population change	Percent change
District: Seven Regions	6,184	6,002	182	3.0%
Westlake-Gladstone Municipality	2,941	2,941	0	0.0%
Alonsa RM	756	814	-58	-7.1%
Sandy Bay First Nations*	2,487	2,247	240	10.7%
District: North Norfolk Municipality	4,414	4,186	228	5.4%
District: Rural Portage	7,084	6,748	336	5.0%
Dakota Tipi First Nation*	139	114	25	21.9%
Dakota Plains First Nation*	42	39	3	7.7%
Long Plain First Nation *	864	679	185	27.2%
Portage RM	6,039	5,916	123	2.1%
District: Cartier-SFX	8,127	6,528	1,599	24.5%
Cartier RM	3,214	3,089	125	4.0%
St Francois Xavier RM	1,264	1,052	212	20.2%
Headingley RM	3,649	2,387	1,262	52.9%
District: Portage city	15,999	14,562	1,437	9.9%
NORTH AREA SUBTOTAL	41,808	38,026	3,782	9.9%

Mid Area	Population 2017	Population 2007	Population change	Percent change
District: Grey Municipality	2,846	2,792	54	1.9%
District: Macdonald	7,753	6,016	1,737	28.9%
District: Red River South	4,515	4,507	8	0.2%
Emerson-Franklin Municipality	2,817	2,736	81	3.0%
Montcalm RM	1,175	1,269	-94	-7.4%
Roseau River FN*	523	502	21	4.2%
District: Roland/Thompson	2,083	1,952	131	6.7%
Roland RM	934	872	62	7.1%
Thompson RM	1,149	1,080	69	6.4%
District: Carman	5,832	5,349	483	9.0%
Carman T	4,089	3,279	810	24.7%
Dufferin RM	1,743	2,070	-327	-15.8%
District: Morris	5,128	4,713	415	8.8%
Morris RM	2,794	2,801	-7	-0.2%
Morris T	2,334	1,912	422	22.1%
District: St Pierre-DeSalaberry	4,375	3,894	481	12.4%
St Pierre Jolys V	1,470	1,131	339	30.0%
De Salaberry RM	2,905	2,763	142	5.1%
MID AREA SUBTOTAL	32,532	29,223	3,309	11.3%

West Area	Population 2017	Population 2007	Population change	Percent change
District: Lorne/Louise/Pembina	8,058	7,770	288	3.7%
Lorne Municipality	3,496	3,233	263	8.1%
Louise Municipality	1,913	1,950	-37	-1.9%
Pembina Municipality	2,414	2,378	-36	1.5%
Swan Lake FN*	235	209	26	12.4%
District: Altona	9,753	8,858	895	10.1%
Rhineland Municipality	4,415	4,566	-151	-3.3%
Altona T	5,338	4,292	1,046	24.4%
District: Stanley	5,719	5,318	401	7.5%
District: Morden City	10,191	7,500	2,691	35.9%
District: Winkler City	17,046	12,122	4,924	40.6%
WEST AREA SUBTOTAL	50,767	41,568	9,199	22.1%

East Area	Population 2017	Population 2007	Population change	Percent change
District: Niverville/Ritchot	13,164	8,798	4,366	49.6%
Niverville T	5,151	2,929	2,222	75.9%
Ritchot RM	8,013	5,869	2,144	36.5%
District: Ste. Anne/LaBroquerie	13,530	8,914	4,616	51.8%
Ste Anne T	2,834	2,366	468	19.8%
Ste Anne RM	5,224	4,444	780	17.6%
LaBroquerie RM	5,472	2,104	3,368	160.1%
District: Taché	9,424	7,958	1,466	18.4%
District: Steinbach City	21,000	16,924	4,076	24.1%
District: Hanover	14,727	11,140	3,587	32.2%
District: Rural East	4,073	3,848	225	5.8%
Piney RM	1,782	1,722	60	3.5%
Stuartburn RM	1,806	1,697	109	6.4%
Unorganized Territories	454	428	26	6.1%
Buffalo Point FN*	31	1	30	3000.0%
EAST AREA SUBTOTAL	75,918	57,582	18,336	31.8%

INDIGENOUS POPULATION

Getting estimates on the number of Indigenous residents is complicated because this is self-reported information – that is relying on a person self-identifying as **First Nation, Métis or Inuit**. The information that Manitoba Health, Seniors and Active Living tracks in the population registry is not considered representative of the Indigenous population in the province.

Within the region, concerted efforts have been made to address this data gap. Southern Health-Santé Sud's Indigenous Health program keeps up to date records which has been gathered annually from First Nations and Métis Central Registries. In addition, the population numbers are cross-referenced with the information derived from the Indigenous and Northern Affairs Canada website.

There are seven First Nations communities and numerous Métis communities within Southern Health-Santé Sud. As of March 2018, there were 8,720 First Nations people living on-reserve and 7,442 First Nations people living off-reserve, over 11,000 Métis people, and a smaller number of Inuit people in the region. It is important to note that there are many Indigenous peoples currently residing in the region and utilizing our health care services that are not registered and are not represented in the numbers provided below.

There may be a number of reasons why an Indigenous person may not be registered; some are as follows:

1. They may not have applied for registration
2. They may have been denied in the registration process due to insufficient or incomplete documentation
3. They may have not been entitled to registration on the Indian Register pursuant to the *Indian Act*
4. They may be waiting for confirmation of their application

Indigenous Population, Southern Health-Santé Sud, March 2018.

First Nation Community	On-Reserve Population	Off-Reserve Population	Total Population
Buffalo Point FN	60	73	133
Dakota Plains FN	174	86	260
Dakota Tipi FN	206	215	421
Long Plain FN	2,368	2,116	4,484
Roseau River Anishinabe FN	1,215	1,459	2,674
Sandy Bay Ojibway FN	4,195	2,564	6,759
Swan Lake FN	502	929	1,431
Total First Nation	8,720	7,442	16,162
Total Métis ¹			(+) 11,065
Total Inuit			25
Total Indigenous (First Nation, Métis, Inuit)			27, 252

¹ Métis population based on March 2016

Source: Southern Health-Santé Sud, March 2018

